



# Stora Enso Wood Supply Finland 2017



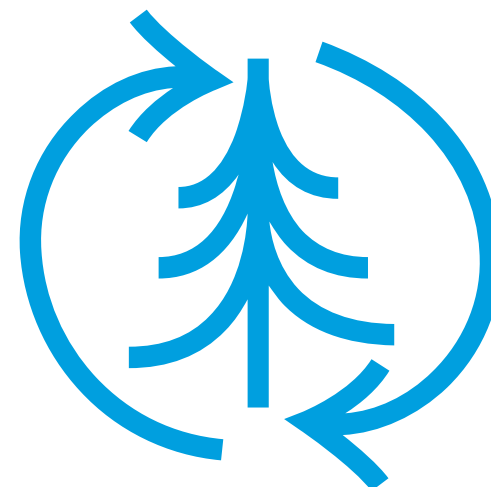
THE RENEWABLE MATERIALS COMPANY

# Stora Enso

## Towards renewable materials company



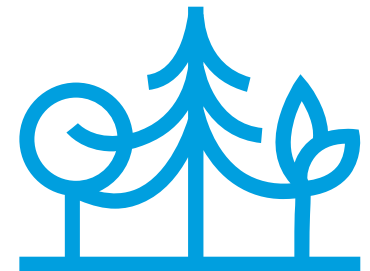
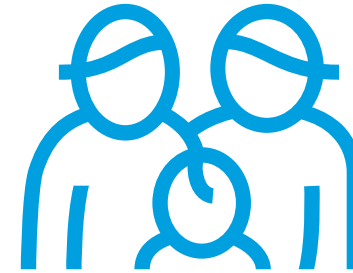
- Stora Enso's business strategy is to transform from a traditional paper and board producer to a **customer focused renewable materials growth company**.
- Stora Enso is a leading provider of renewable solutions in packaging, biomaterials, wood and paper on global markets.
- We always rethink the old and expand to the new to offer our customers **innovative solutions based on renewable materials**.



# The Forest is a Source of Renewable Raw Materials



- In future there will be more and more demand for renewable raw materials. Therefore the **demand of wood increases** and forests will obtain their value.
- Stora Enso aims to **replace nonrenewable raw materials with wood**. The northern forests are very important to Stora Enso now and in the future.
- Finnish forest owners can be proud of their forests – forests provide well-being for both their owners as well as the entire world.



# Stora Enso in a Nutshell

## Divisions



Consumer Board



Packaging Solutions



Biomaterials



Wood Products



Paper



**Our purpose** Do good for the people and the planet

**Our values** Lead  
Do what's right

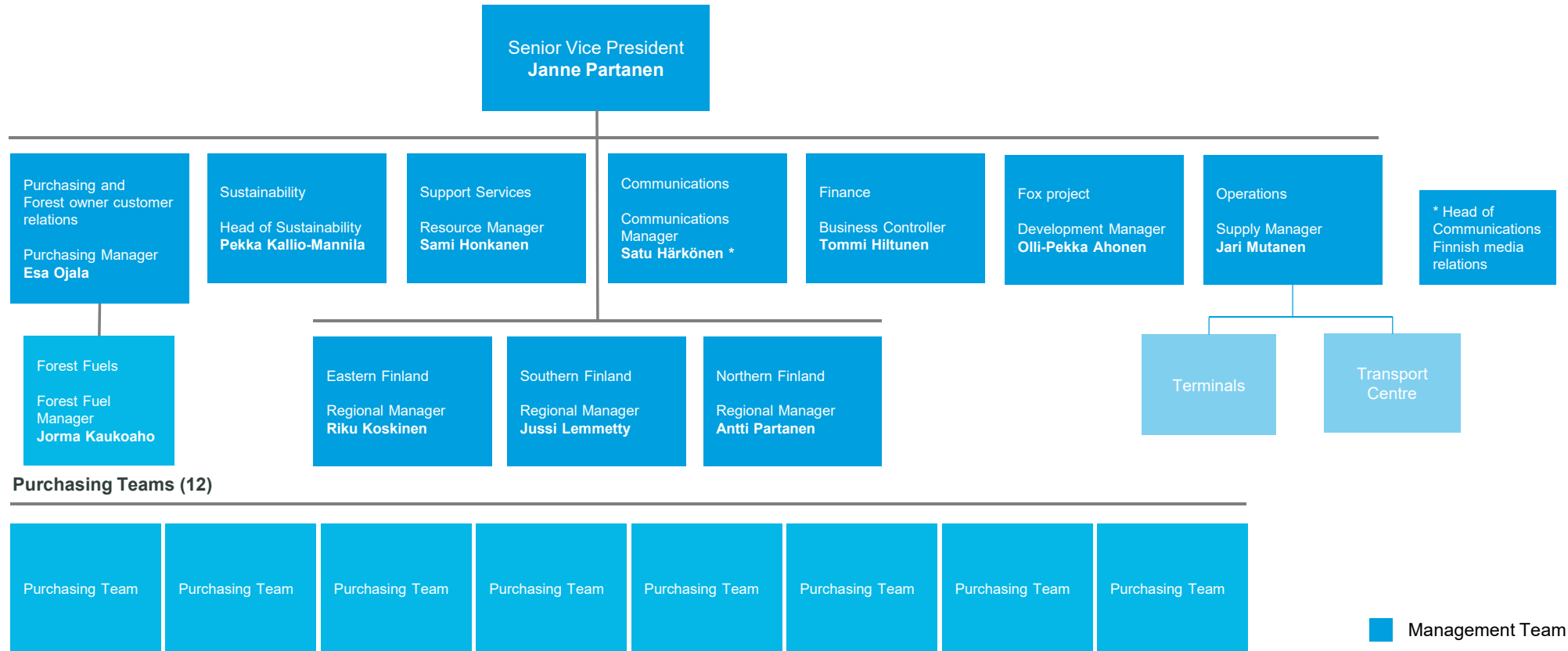
# Stora Enso Wood Supply Finland in a Nutshell



- Stora Enso Wood Supply Finland delivers wood to Stora Enso's Finnish pulp and paper mills as well as to the company's sawmills. In addition we provide bioenergy to heating and power plants.
- We procure most of our wood from Finnish forest owners. We deliver wood from forest to internal and external mills about 23 million m<sup>3</sup> annually.
- We offer services and tools for easier and more effective forest ownership.



# Wood Supply Finland Organization

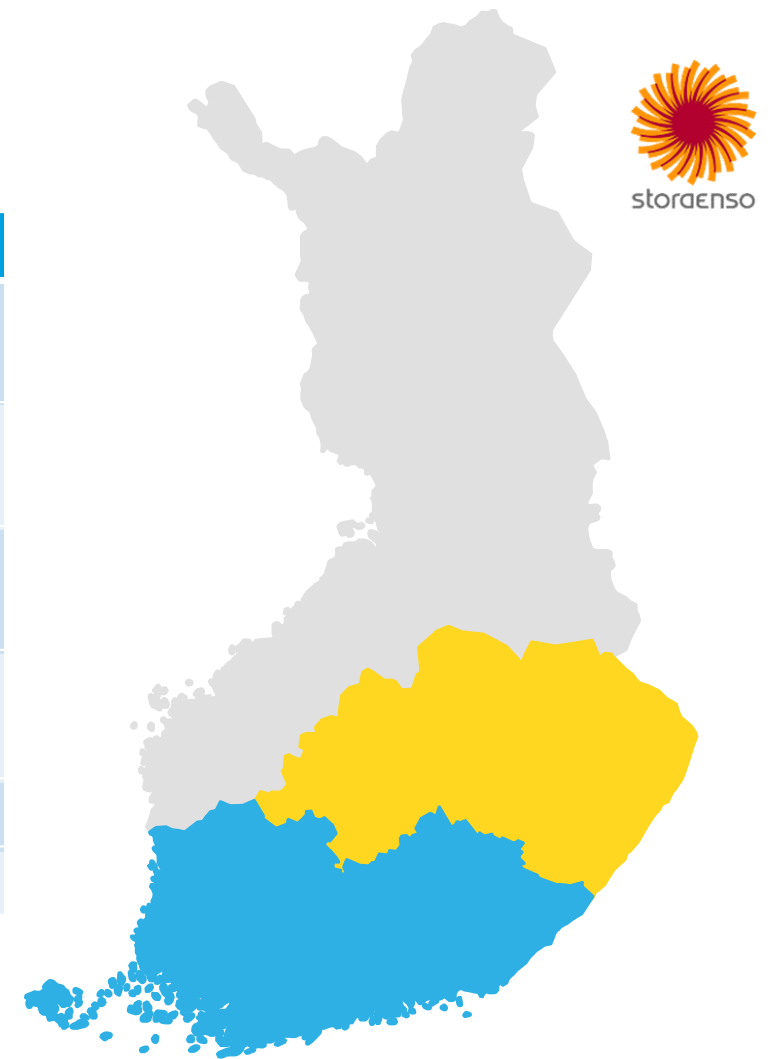


# Wood Supply Finland

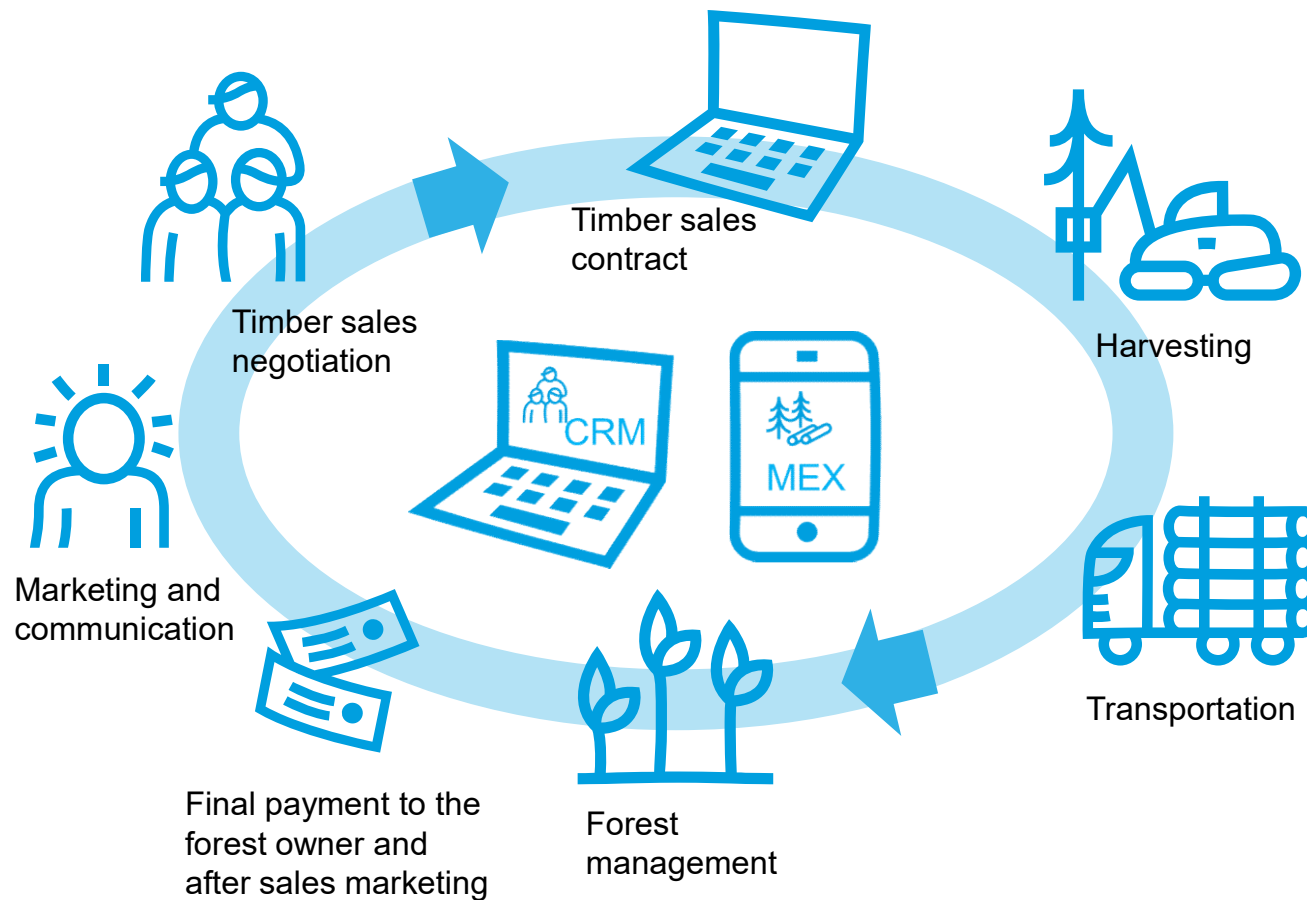
## Key Facts 2016

<b>Personnel</b>	<b>560</b>
Harvest, transport and forest service entrepreneurs as contractors	110
Supply chains	345
Timber trucks	230
Total Wood Procurement	23 million m <sup>3</sup> (with bark)
Net Sales	1074 million euros
Procurement Regions	3

- Northern Finland
- Eastern Finland
- Southern Finland



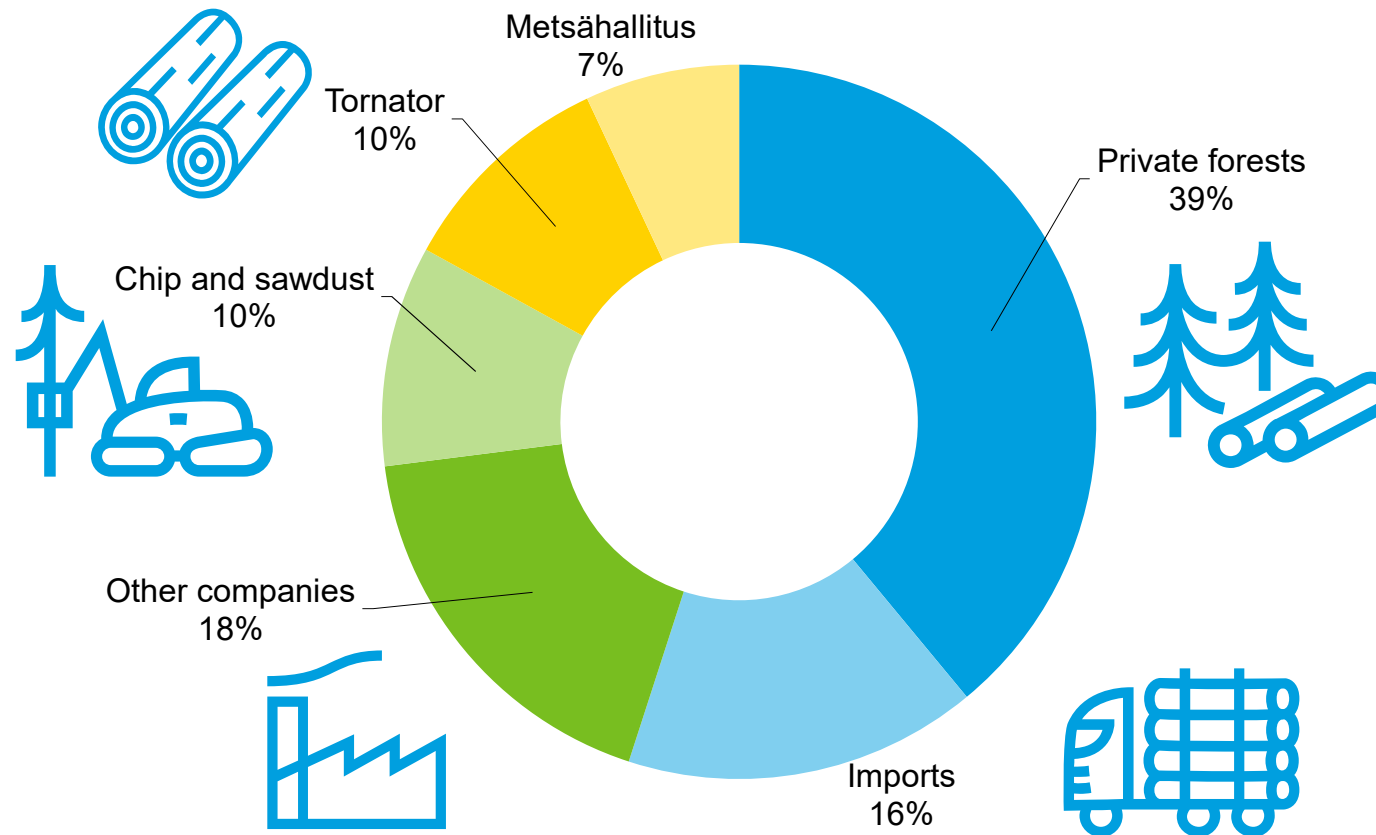
# Wood Procurement Process





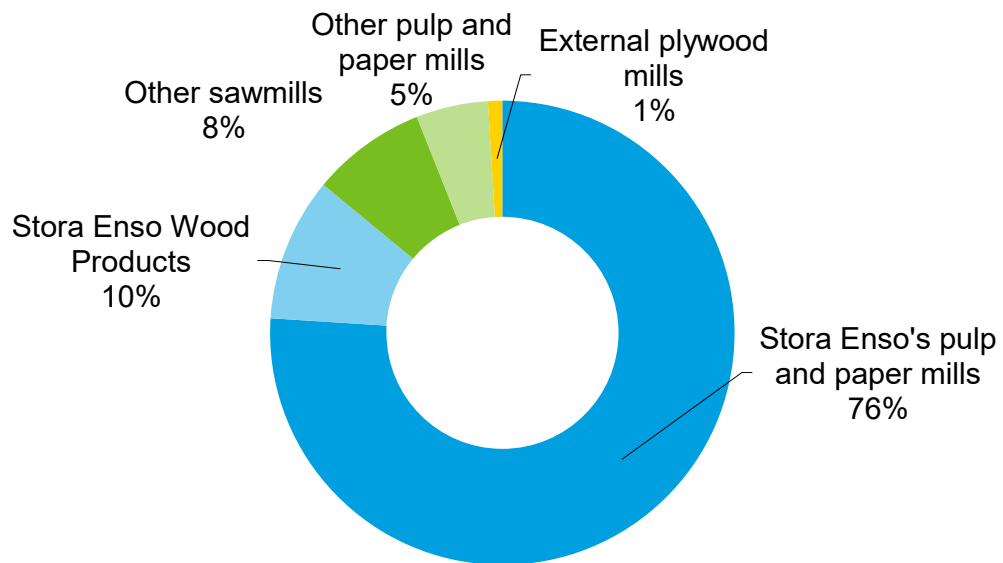
# Wood Procurement 2016

23 million m<sup>3</sup> (with bark)

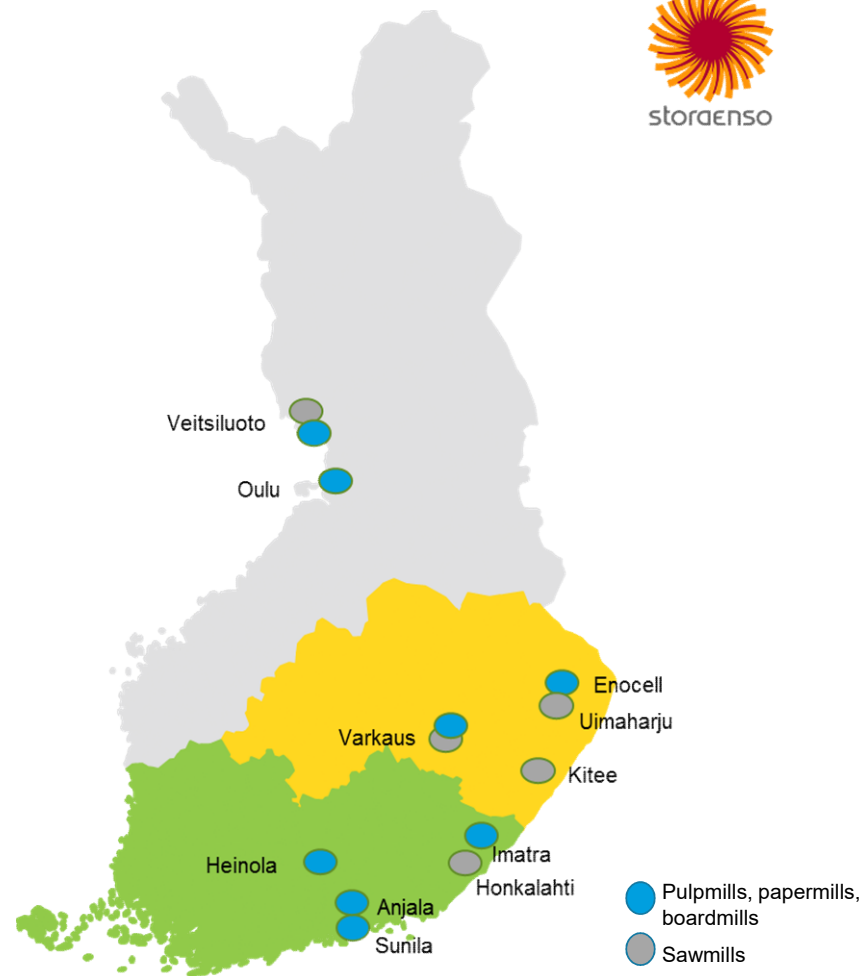


# Wood Supply Finland

## Deliveries in 2016

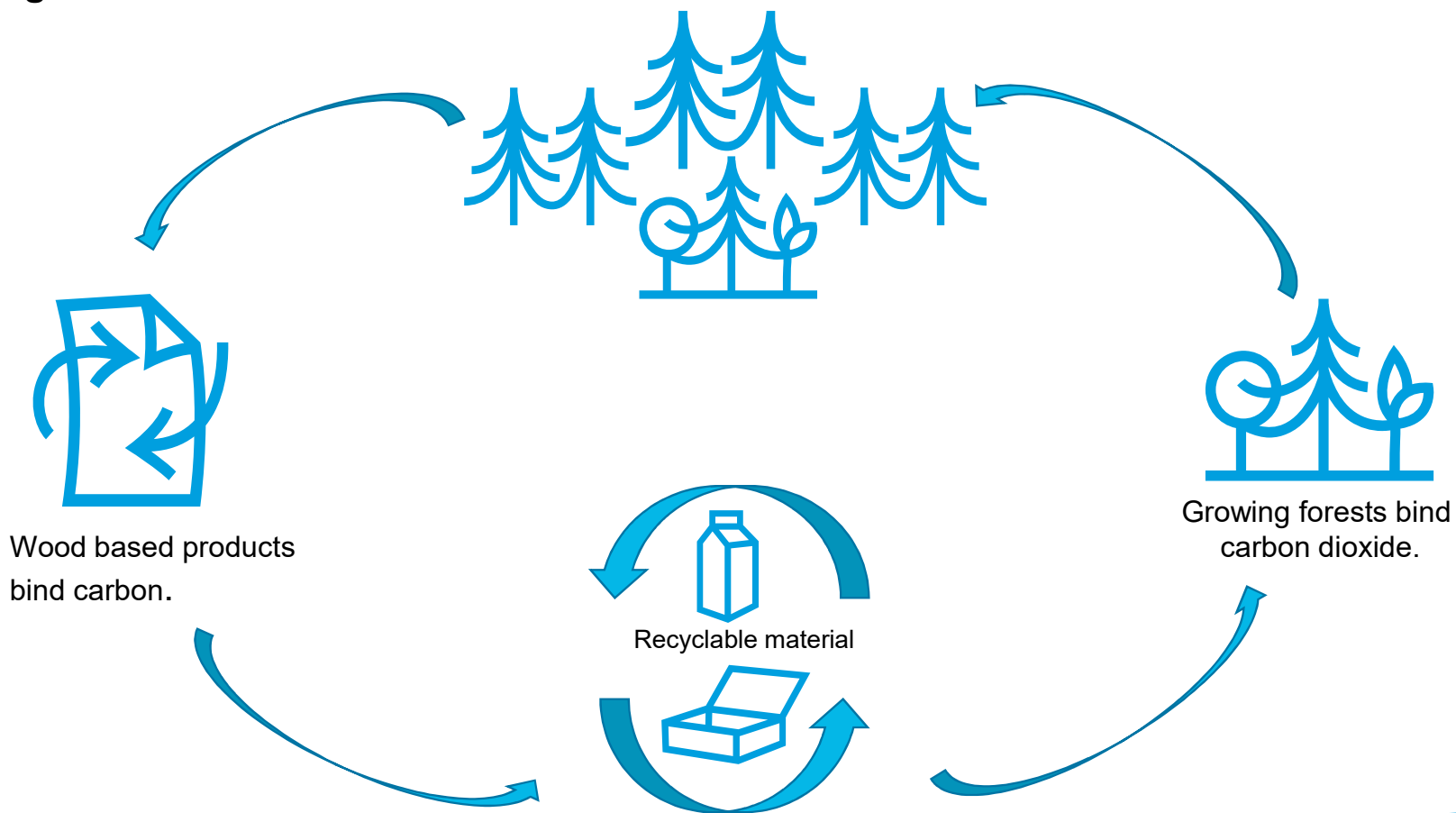


All wood procured in Finland is delivered to Finnish pulp and paper mills and sawmills.



# Wood is a Renewable Raw Material

It always grows back



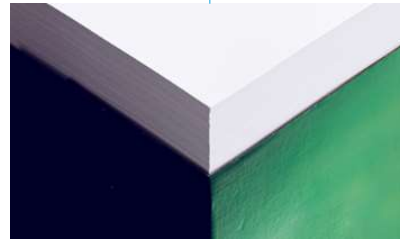
# The World's most Versatile Natural Resource



~50 m<sup>3</sup>



2 100 000  
cardboard cups



1 200 000 copying  
paper sheets

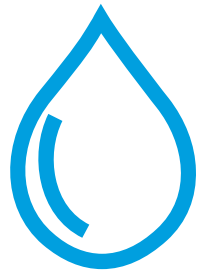


80 MWh logging waste,  
which can heat a town  
house for 3 years

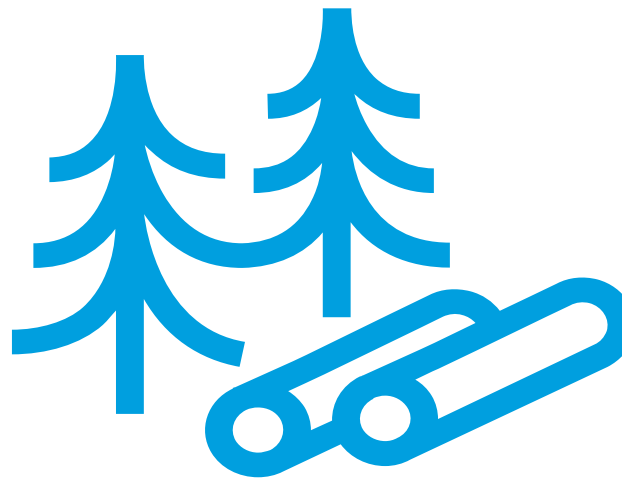


150 m<sup>2</sup> CLT wall

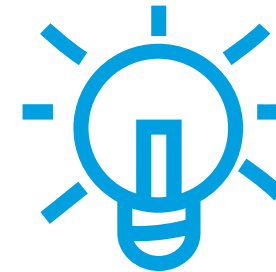
# Wood is a Renewable Source of Energy



Bioethanol  
Pyrolysis Oil



Stumps  
Bark and sawdust  
Small-dimensional wood  
Logging waste



Electricity



Heat



Fuel

The energy used by Stora Enso mills in Finland is 70% from wood-based material.

# Status of Certification

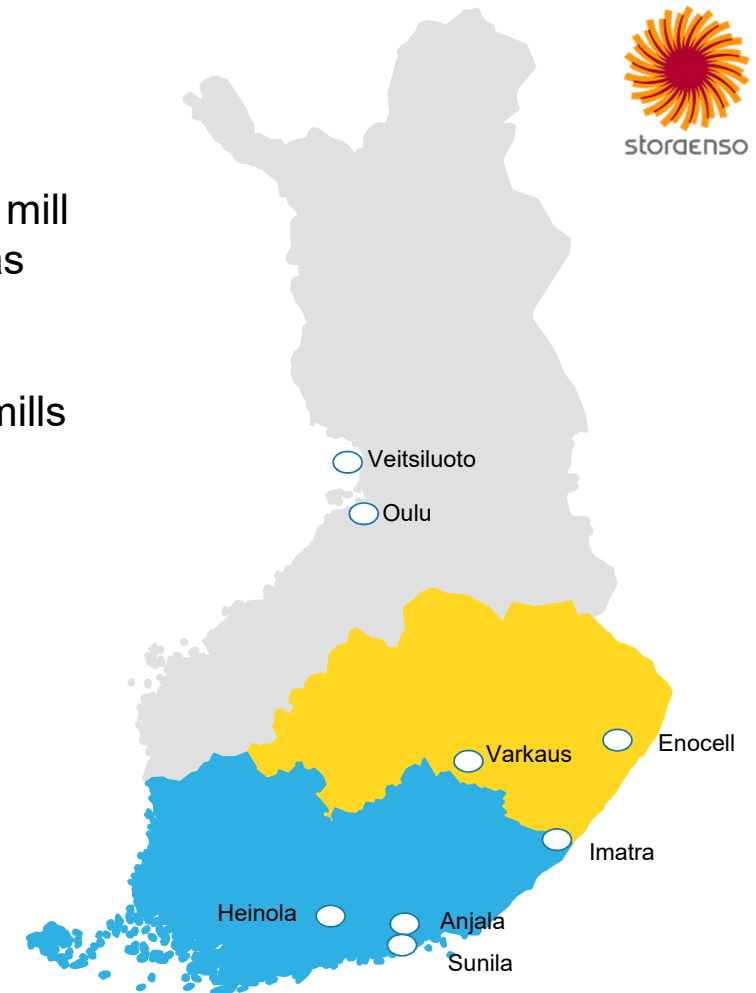


- ISO 9001 Quality Management System
- ISO 14001 Environmental Management System
- ISO 50001 Energy Management System
- OHSAS 18001 Occupational Health and Safety
- ISO 50001 Energy Management Standard
- 90% of Finnish forests are covered by PEFC™
- Stora Enso also supports FSC® certification in Finland and improves its FSC-competence. FSC group certification hosted by Stora Enso helps private forest owners to certify their forests.
  - National Finnish FSC standard was introduced in 1st May 2011.
  - Wood Supply Finland obtained a certificate for its FSC group scheme for private forest owners in 2005.
- Chain-of-Custody covers all wood sources from forests to mills
  - Both PEFC and FSC CoC certificates



# Terminal operations

- Terminal operations are responsible for raw materials regarding mill receiving, measurement, storage and feeding into the process as well as operational customer co-operation.
- Customer Service Managers keep in touch with their assigned mills every day, making sure that everything in wood supply goes as planned.





storaenso

**Thank you!**